

7 Z-1 1967-1968 USFS notes

Section Cor. Sec's 31-36

Notes of orig gov't survey
of ~~1873~~ 1871

Y. Pine 19" N40°E 27.06'

B. Pine 9" N66°W 60.06'

Notes by G.E. Marshall Forest
Supervision IN 1924, states that
Corner is on South side of
Soo Line R.R. track right of way
Just west of platform which
is on North side. A Norway
10" has been squared up for Cor.
tree is located on bank at
Edge of Cot. orig Corner was
North in the Cot.

Chained to this location from
Closing Corner for Section's 156
for Township's South. My dist. &
bearing falls approx the same as
described in 1924. No evidence
found.

7-5-67
James Ekstrom

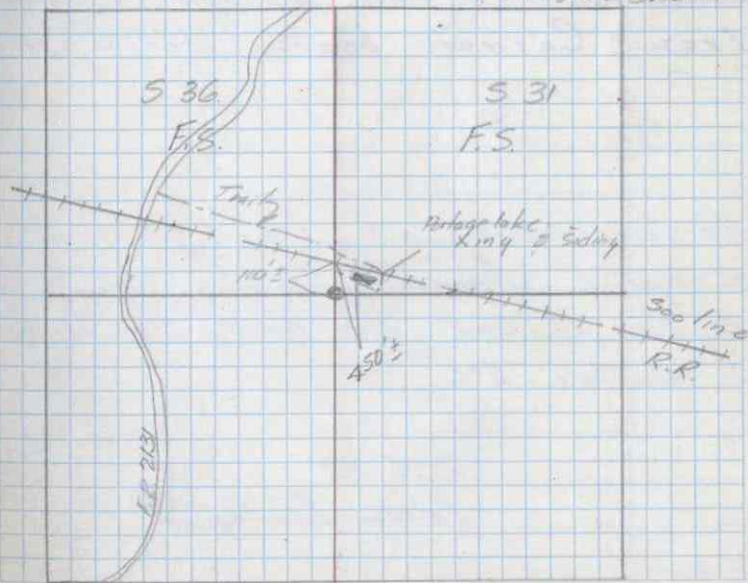
SEE PAGE 46 THIS BOOK

This corner set by proportional measurement
from cadastral survey delineating the Top & Edge lines
Set a 6 inch diameter cement long cylindrical
concrete monument capped with a 3 inch diameter
brass cap marked -2

T. 145N.
R28W. R28W.
S. 1.
S36 | S31
S1
1968
R.L.S. No. 6807

Witnessed by
R. Pine 8" N39°E 37.0 feet scribed S31 BT
R. Pine 5" N6°E 42.51 feet scribed S31 BT
R. Pine 7" N18°W 41.34 feet scribed S36 BT
J. Pine 8" N58°W 23.2 feet scribed S36 BT
Cedar Post 6" dia x 60" N16°E 9.1 feet with
sign 54" attached

7/2/68
W.E. Ekstrom



SECTION CORNER TO SECTIONS 36+31
 FOUND 6" CONCRETE CYLINDER 24" HIGH - IN PLACE
 IN GOOD CONDITION - SET IN 1968 RLS 6807

R. PINE 8 N39E 37.0'
 NOW 15" N. PINE N39E 37.0' SCRIBE OVERGROWN
 R. PINE 5 N6E 42.37'
 NOW 9" N. PINE N6E 42.37' SCRIBE OVERGROWN
 R. PINE 7 N18W 41.34'
 NOW 12" N. PINE N18W 41.34' SCRIBE OVERGROWN
 J. PINE 8 N58W 23.36'
 NOW 10" X 12" HIGH J. PINE STUB N58W 23.36' ^{SCRIBE VISIBLE}

MKD NEW BT. 8/14/87 CK/MH
 N. PINE 17 N54W 54.50 MKD S36 BT
 8' STEEL POST DUE WEST 4.0' WITH SIGN 54-9

PUT FSLP ON 17 J. PINE ON SOUTH CLEARING OF
 ABANDOND R.R. LINE SE + NW - FROM TAG S17W
 80' TO SEC. COR. MONU.