

# CERTIFICATE OF LOCATION OF GOVERNMENT CORNER

Standard Southeast corner of Section 36, Township 145 N., Range 29 W., 5th P.M.  
State of Minnesota, County of Cass

At the corner location shown on the sketch:

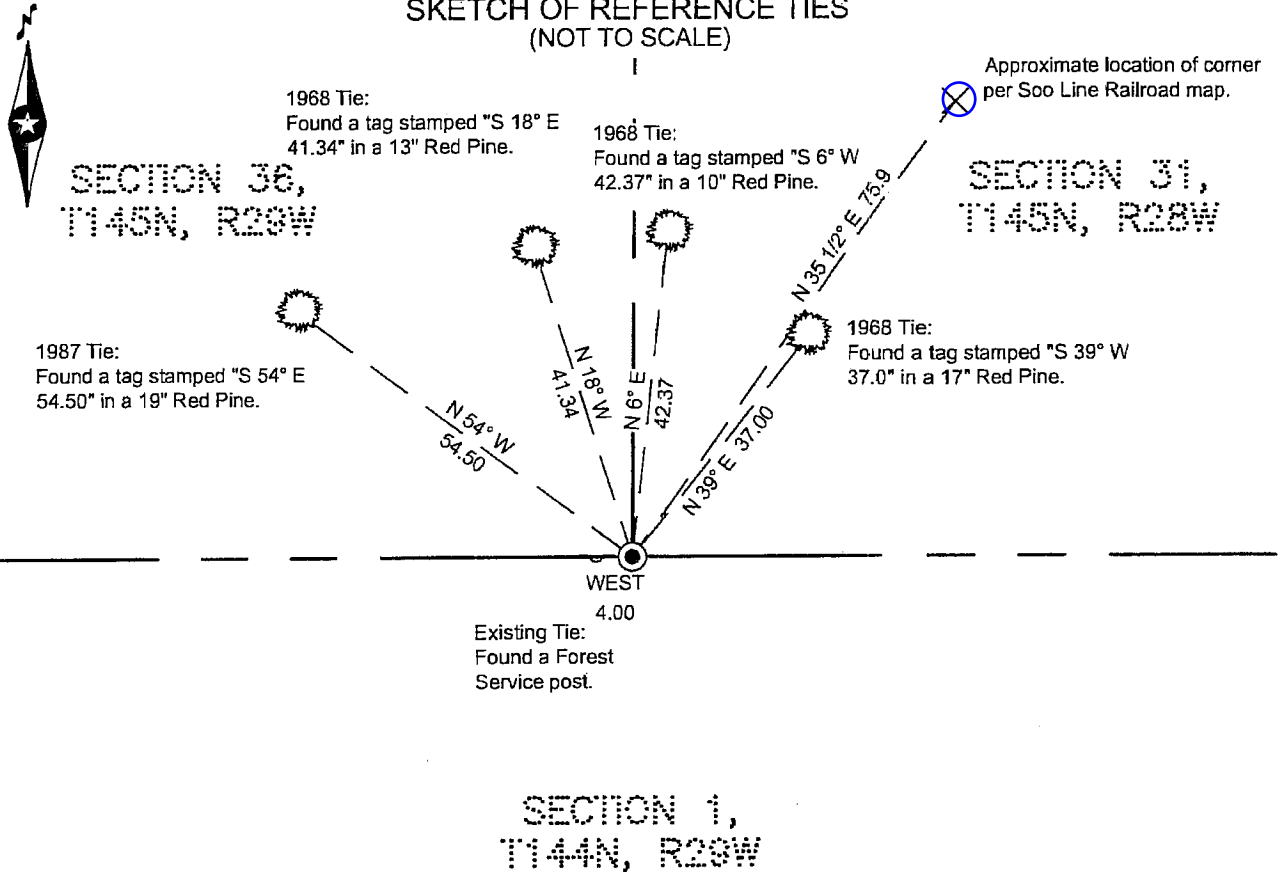
On 03-29-2011 found a 6" diameter concrete cylinder with a 2.5" diameter brass cap,  
18" above the surface grade. The monument is approximately 115 feet southerly of the old railroad grade.

left monument as found  lowered monument  removed monument (explain)

On 07-29-2011 lowered monument so that the top is flush with the surface grade.



## SKETCH OF REFERENCE TIES (NOT TO SCALE)



NOTE: All bearings are true.

Statement of evidence relative to this corner location is on the back of this page.

I hereby certify that this survey, plan, or report was prepared by me or under my direct supervision and that I am a duly Licensed land Surveyor under the laws of the State of Minnesota. I further certify that this United States public land survey monument record is correct and complete to the best of my knowledge and belief.

Terry L. Freeman, Land Surveyor

Date 3/1/12

MN License No. 21367

**A000578699**  
**OFFICE OF COUNTY RECORDER**  
**CASS COUNTY MINNESOTA**  
**CERTIFIED, FILED, AND/OR**  
**RECORDED ON**  
**03/15/2012 10:27:28 AM**  
**AS DOC #: A000578699**  
**PAGES: 2 REC FEES: 0.00**  
**KATHRYN M. NORBY**  
**COUNTY RECORDER**

# Certificate of Location back

Index No. Z.0 - 25.0

## STATEMENT ON EVIDENCE

**Standard Southeast Corner of Section 36, Township 145 North, Range 29 West of the 5th Principal Meridian.**

In 1871, G.R. Stuntz, U.S. Deputy Surveyor, set a wood post in place to mark the location of this corner and established bearing trees as follows: a 19" Yellow Pine, N40°E 41 links; a 9" Black Pine, N66°W 91 links. Copies of notes on file in the Cass County Survey Department.

Example

No Date, Soo Line Railroad Valuation Map on file at the Minnesota Department of Transportation shows the subject corner to be 57 feet southerly of centerline Sta. 318+25 at an angle of 70°32' from the railroad centerline tangent to the southeast. A copy of the map is on file in the Cass County Survey Department.

Example

1900 and 1904, U.S. Army Corp of Engineers maps for the Leech Lake and Lake Winnibigoshish Reservoirs show corner found by surveyors Horace Dunaway and T. Milton Fowble. A copy of the map is on file in the Cass County Survey Department.

Example

In 1924, G.E. Marshall, a U.S. Forest Supervisor, found a "squared up", 10" Norway Pine at the corner position. He noted that the position falls south of the Soo Line R/W, just west of platform (on north side), on bank at edge of Cut. Original corner was north in the cut. Information on file in U.S.F.S. Cass Lake office T145N R28W Book 1, Pg. 7.

Example

1955, Curo survey notes in Book 245, show they were doing a survey in Section 31-145-28. On page 36, the notes indicate the Forest Ranger told him the corner was in. In searching for corner, he indicates that area was logged and the yellow location poster was gone. Sketch on page 41 shows symbol for corner.

Example

In 1967, J. Ekstrom, a U.S. Forest Surveyor, found no evidence at the corner position. Information on file in U.S.F.S. Cass Lake office T145N R28W Book 1, Pg. 7.

Example

On July 8, 1968, W. Okerman, a U.S. Forest Surveyor, set a concrete cylinder with brass cap at the corner position by proportional measurement from Cadastral Survey, +/- 110 feet south of R.R. tracks. He also established four new bearing ties as follows: an 8" Red Pine, N39°E, 37.00 feet; a 5" Red Pine, N6°E, 42.37 feet; a 7" Red Pine, N18°W, 41.34 feet; and an 8" Jack Pine, N58°W, 23.36 feet. Information on file in U.S.F.S. Cass Lake office T145N R28W Book 1, Pg. 7.

Example

In 1974, C.E. Akin, United States Cadastral Surveyor, made a dependent resurvey of a portion of the East Boundary and Subdivision lines of Township 145 North, Range 29 West. The notes on pages 1 and 2, which are available on the BLM website, state "Beginning at the local standard cor. of Tp. 145 N., Rs. 28 and 29 W., set by R.L.S. No. 6807, in 1968, and which is harmoniously related to existing orig. cors. recovered in this resurvey, and which I accept as the best available evidence of the position of the orig. cor. The record indicates that all of the 1968 accessories were recovered. (Running notes on file in Cass County Survey Department)

Example

On August 14, 1987, M. Hayes and C. Krause, a U.S.F.S. surveyors, found the 1968 concrete cylinder in good condition and the four BTs. They also established three new bearing ties as follows: a 17" Norway Pine, N54°W, 54.50 feet; a 17" Jack Pine, N17°E, 80.00 feet; and a steel post, West, 4.0 feet. Information on file in U.S.F.S. Cass Lake office T145N R28W Book 1, Pg. 46.

Example

On March 29, 2011, a Northern Engineering & Consulting survey crew found a 2-1/2" brass cap in a 6" concrete cylinder, up 18" at ground surface. Five existing ties were found as shown on the front page of this certificate.

On July 29, 2011, a Northern Engineering & Consulting survey crew removed found concrete and dug down so that the top is flush with the surface grade. Found concrete monument accepted as set in the lost position in 1968 by the USFS Surveyor and used by the BLM in 1974 as a point of local control.

December 2011, The Cass County Survey Office (CCSO) located the old railroad bed and nearby corners, using GPS in topo mode. They then calculated the approximate location of the corner as shown on the Soo Line Railroad map. This approximate location is N 35 1/2° E from the concrete cylinder accepted as a point of local control.

### **Minnesota State Plane (Central Zone)**

Northing 1175826.819  
Easting 2614893.416

### **County Coordinates (Cass County North)**

Northing 290056.736  
Easting 481959.171

